

TRACT 33088 - Plaquemines Parish, Louisiana

All of the lands now or formerly constituting the beds and bottoms of all water bodies of every nature and description and all islands and other lands formed by accretion or reliction, except tax lands, owned by and not under mineral lease from the State of Louisiana on January 10, 2001, situated in Plaquemines Parish, Louisiana, within the following described boundaries: Beginning at a point having Coordinates of X = 2,517,942 and Y = 347,639; thence South 03 degrees 04 minutes 54 seconds East, a distance of 5,152.45 feet to a point having Coordinates of X = 2,518,219 and Y = 342,494; thence South 87 degrees 30 minutes 3.9 seconds West 11,439.97 feet to a point having Coordinates of X = 2,506,780.00 and Y = 341,994.00; thence North 00 degrees 32 minutes 43 seconds West, a distance of 2,102.10 ft. to a point having Coordinates of X = 2,506,760.00 and Y = 344,096.00; thence South 88 degrees 15 minutes 14 seconds West, a distance of 5,218.42 feet to the Southeast corner of State Lease 1212 and having Coordinates of X = 2,501,544 and Y = 343,937; thence North degrees 05 minutes 15 seconds West 2,727.43 feet along the East line of State Lease 1212 to the Southwest corner of State Lease No. 16568 having Coordinates of X = 2,501,444.48 and Y = 346,664.43; thence North 88 degrees 51 minutes 16 seconds East 3,840 feet along the Southern boundary of State Lease 16568 to the Southeast corner of State Lease No. 16568 having Coordinates of X = 2,505,316.10 and Y = 346,741.86; thence Northerly along the East line of State Lease No. 16568 a distance of 2,353.87 feet to the Northeast corner of State Lease No. 16568 having Coordinates of X = 2,505,252.18 and Y = 349,095.34; thence South 88 degrees 51 minutes 16 seconds West 3,880 feet along the North line of State Lease No. 16568 to the Northwest corner of State Lease No. 16568 having Coordinates of X = 2,501,358.72 and Y = 349,017.48; thence North 05 minutes 15 seconds West, a distance of 1,505.52 feet along the East line of State Lease No. 1212 to its intersection with a line bearing South 86 degrees 32 minutes West extended from a point having Coordinates of X = 2,506,920.00 and Y = 350,863.00; thence North 86 degrees 32 minutes 08 seconds East, a distance of 5,626 feet along said line to said point having Coordinates of X = 2,506,920.00 and Y = 350,863.00; thence South 01 degrees 21 minutes 49 seconds West, a distance of 3,614.02 feet to a point having Coordinates of X = 2,506,834.00 and Y = 347,250.00; thence North 87 degrees 59 minutes 40 seconds East, a distance of 11,114.81 feet to the point of beginning, **LESS AND EXCEPT** all that portion of State Lease No. 1212 and State Lease No. 16658 that may lie within the above described tract, containing approximately 1,101.00 acres, as shown outlined in red on a plat on file in the Office of Mineral Resources, Department of Natural Resources, as provided by the applicant. All bearings, distances and coordinates are based on Louisiana Coordinate System of 1927 (South Zone).

NOTE: The boundary description and plat for this tract as shown and as advertised were supplied by the nominating party and have not been checked for accuracy by the staff of the Office of Mineral Resources. Anything which may affect the acreage, the shape or the location of the tract, such as non-closure of or incorrect X, Y coordinates or title disputed acreage, or which may affect the status of the tract for leasing, such as overlap of prior leases or nominated tracts, or which may affect potential operations on leases taken, such as inclusion in areas under the jurisdiction of the Department of Wildlife and Fisheries, will not be specifically determined unless and until a bid on this tract is accepted by the Mineral Board; which

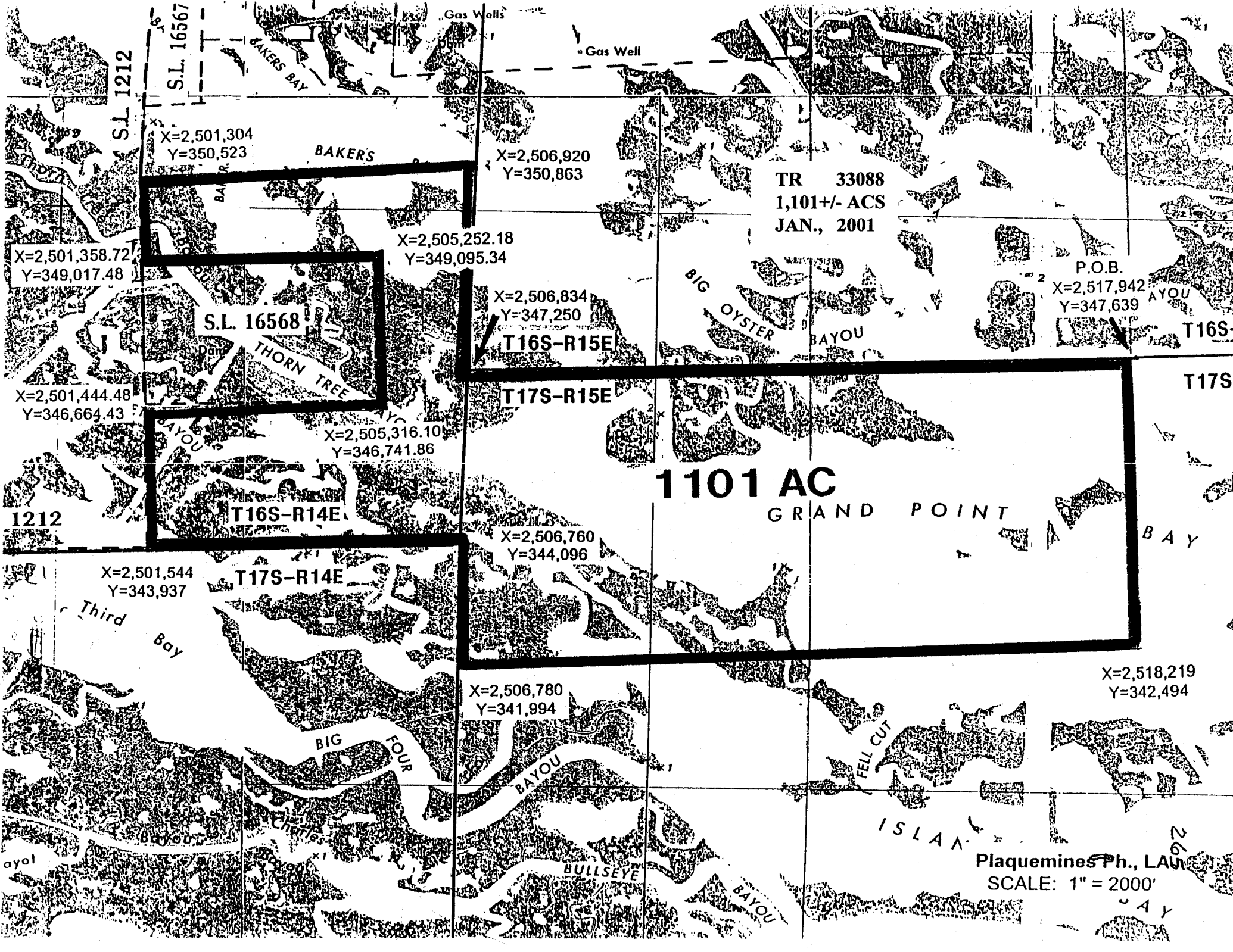
bid will be accepted on a per acre basis and which acceptance will be conditional upon such specific determinations being made. Once a bid is conditionally accepted by the Mineral Board, the staff will, within a period following the date of the lease sale, determine the acreage, shape and location of the potential lease area of the tract, the status for leasing of all or any portion thereof, and any conditions which may affect potential operations thereon. These determinations may render all or a portion of the bid area unleaseable or may increase or decrease the State claimed acreage such that the total bonus/rental ultimately required may either exceed the bonus/rental paid at the lease sale, which will require additional payment by the successful bidder, or allow the successful bidder a refund of excessive payment. The successful bidder will be notified of the determinations by the staff and given an opportunity to view the bid area acreage, configuration and location as it has been specifically determined. If all or a portion of the bid area is unleaseable due to overlap of an existing lease, the successful bidder will be given an opportunity to accept or reject a new lease on that portion of the bid area which is not unleaseable. If rejected, the bid and all monies accompanying the bid will be returned to the successful bidder and no lease will be issued. In all other cases a new lease will be issued and any additional per acre bonus/rental, 10% administration fee or \$10 and \$5 per acre fees due as a result of staff determination of more State acreage in the bid area than determined by the successful bidder will be paid prior to the lease being issued. A determination of less State acreage in the bid area will result in a return to the successful bidder of any overpayment.

NOTE: The above tract is located in or near an oyster restricted area and all operations in such area must be conducted in strict conformity with the stipulations and/or regulations of the Louisiana Department of Wildlife and Fisheries.

NOTE: The State of Louisiana does hereby reserve, and this lease shall be subject to, the imprescriptible right of surface use in the nature of a servitude in favor of the Department of Natural Resources, including its Offices and Commissions, for the sole purpose of implementing, constructing, servicing and maintaining approved coastal zone management and/or restoration projects. Utilization of any and all rights derived under this lease by the mineral lessee, its agents, successors or assigns, shall not interfere with nor hinder the reasonable surface use by the Department of Natural Resources, its Offices or Commissions, as hereinabove reserved.

Applicant: Tom Scarbrock

Bidder	Cash Payment	Price / Acre	Rental	Oil	Gas	Other



X=2,501,304
Y=350,523

X=2,506,920
Y=350,863

TR 33088
1,101+/- ACS
JAN., 2001

X=2,501,358.72
Y=349,017.48

X=2,505,252.18
Y=349,095.34

P.O.B.
X=2,517,942
Y=347,639

S.L. 16568

X=2,506,834
Y=347,250

T16S-R15E

X=2,501,444.48
Y=346,664.43

X=2,505,316.10
Y=346,741.86

T17S-R15E

1101 AC

GRAND POINT

1212

T16S-R14E

X=2,506,760
Y=344,096

X=2,501,544
Y=343,937

T17S-R14E

X=2,506,780
Y=341,994

X=2,518,219
Y=342,494

Plaquemines Ph., LA
SCALE: 1" = 2000'

TRACT 33089 - Plaquemines Parish, Louisiana

All of the lands now or formerly constituting the beds and bottoms of all water bodies of every nature and description and all islands and other lands formed by accretion or reliction, except tax lands, owned by and not under mineral lease from the State of Louisiana on January 10, 2001, situated in Plaquemines Parish, Louisiana, within the following described boundaries: Beginning at a point having Coordinates of X = 2,496,307 and Y = 343,850 in T17S-R14E, also being the most Northerly Northeast corner of State Lease No. 1319 and the Southern boundary of State Lease No. 1212; thence Easterly 10,456 feet a portion of way being along the Southern boundary of State Lease No. 1212 to a point having Coordinates of X = 2,506,760 and Y = 344,096; thence Southerly for approximately 2,102 f. to a point having Coordinates of X = 2,506,780 and Y = 341,994 in T17S-R15E; thence Easterly for approximately 5,910 ft. to a point having Coordinates of X = 2,512,686 and Y = 342,237; thence Southerly for approximately 13,048 ft. to a point having Coordinates of X = 2,512,761 and Y = 329,190; thence Westerly for approximately 5,876 ft. to a point having Coordinates of X = 2,506,888 and Y = 328,995; thence Southerly for approximately 2,932 ft. to a point having Coordinates of X = 2,506,907 and Y = 326,063 in T17S-R14E; thence Northwesterly along the forty-arpent line, also being the Northeastern boundary of State Lease No. 1319 for approximately 16,740 ft. to the point having Coordinates of X = 2,496,554 and Y = 338,428 in T17S-R14E where it intersects the forty-arpent line; thence Northerly along the East boundary of State Lease No. 1319 approximately 5,428 ft. to the point of beginning, **LESS AND EXCEPT** all those portions of State Lease No. 1319 and State Lease No. 1212 that may lie within the above described tract, containing approximately 1,464 acres, as shown outlined in red on a plat on file in the Office of Mineral Resources, Department of Natural Resources, as provided by the applicant. All bearings, distances and coordinates are based on Louisiana Coordinate System of 1927 (South Zone).

NOTE: The boundary description and plat for this tract as shown and as advertised were supplied by the nominating party and have not been checked for accuracy by the staff of the Office of Mineral Resources. Anything which may affect the acreage, the shape or the location of the tract, such as non-closure of or incorrect X, Y coordinates or title disputed acreage, or which may affect the status of the tract for leasing, such as overlap of prior leases or nominated tracts, or which may affect potential operations on leases taken, such as inclusion in areas under the jurisdiction of the Department of Wildlife and Fisheries, will not be specifically determined unless and until a bid on this tract is accepted by the Mineral Board; which bid will be accepted on a per acre basis and which acceptance will be conditional upon such specific determinations being made. Once a bid is conditionally accepted by the Mineral Board, the staff will, within a period following the date of the lease sale, determine the acreage, shape and location of the potential lease area of the tract, the status for leasing of all or any portion thereof, and any conditions which may affect potential operations thereon. These determinations may render all or a portion of the bid area unleaseable or may increase or decrease the State claimed acreage such that the total bonus/rental ultimately required may either exceed the bonus/rental paid at the lease sale, which will require additional payment by the successful bidder, or allow the successful bidder a

refund of excessive payment. The successful bidder will be notified of the determinations by the staff and given an opportunity to view the bid area acreage, configuration and location as it has been specifically determined. If all or a portion of the bid area is unleaseable due to overlap of an existing lease, the successful bidder will be given an opportunity to accept or reject a new lease on that portion of the bid area which is not unleaseable. If rejected, the bid and all monies accompanying the bid will be returned to the successful bidder and no lease will be issued. In all other cases a new lease will be issued and any additional per acre bonus/rental, 10% administration fee or \$10 and \$5 per acre fees due as a result of staff determination of more State acreage in the bid area than determined by the successful bidder will be paid prior to the lease being issued. A determination of less State acreage in the bid area will result in a return to the successful bidder of any overpayment.

NOTE: The above tract is located in or near an oyster restricted area and all operations in such area must be conducted in strict conformity with the stipulations and/or regulations of the Louisiana Department of Wildlife and Fisheries.

NOTE: The State of Louisiana does hereby reserve, and this lease shall be subject to, the imprescriptible right of surface use in the nature of a servitude in favor of the Department of Natural Resources, including its Offices and Commissions, for the sole purpose of implementing, constructing, servicing and maintaining approved coastal zone management and/or restoration projects. Utilization of any and all rights derived under this lease by the mineral lessee, its agents, successors or assigns, shall not interfere with nor hinder the reasonable surface use by the Department of Natural Resources, its Offices or Commissions, as hereinabove reserved.

Applicant: Tom Scarbrock

Bidder	Cash Payment	Price / Acre	Rental	Oil	Gas	Other

S.L. 1212

T16S-R14E

268 GR

X=2,506,760
Y= 344,096

P.O.B.
X=2,496,307
Y= 343,850

T17S-R14E

X=2,506,780
Y= 341,994

X=2,512,686
Y= 342,237

Third Bay

BIG FOUR BAYOU

X=2,496,554
Y= 338,428

Bay Schayot

BULLSEYE BAYOU

BAYOU

S.L. 1319

Cocuin Bay

1464 AC

TR 33089
1,464+/- ACS
JAN., 2001

LONG RISE BAYOU

X=2,512,761
Y= 329,190

T17S-R14E

T17S-R14E

T17S-R15E

Felici Bay

X=2,506,888
Y= 328,995

S.L. 1319

S.L. 1319

X=2,506,907
Y= 326,063

Plaquemines Ph., LA
SCALE: 1" = 2000'