

TRACT 33034 - Calcasieu Parish, Louisiana

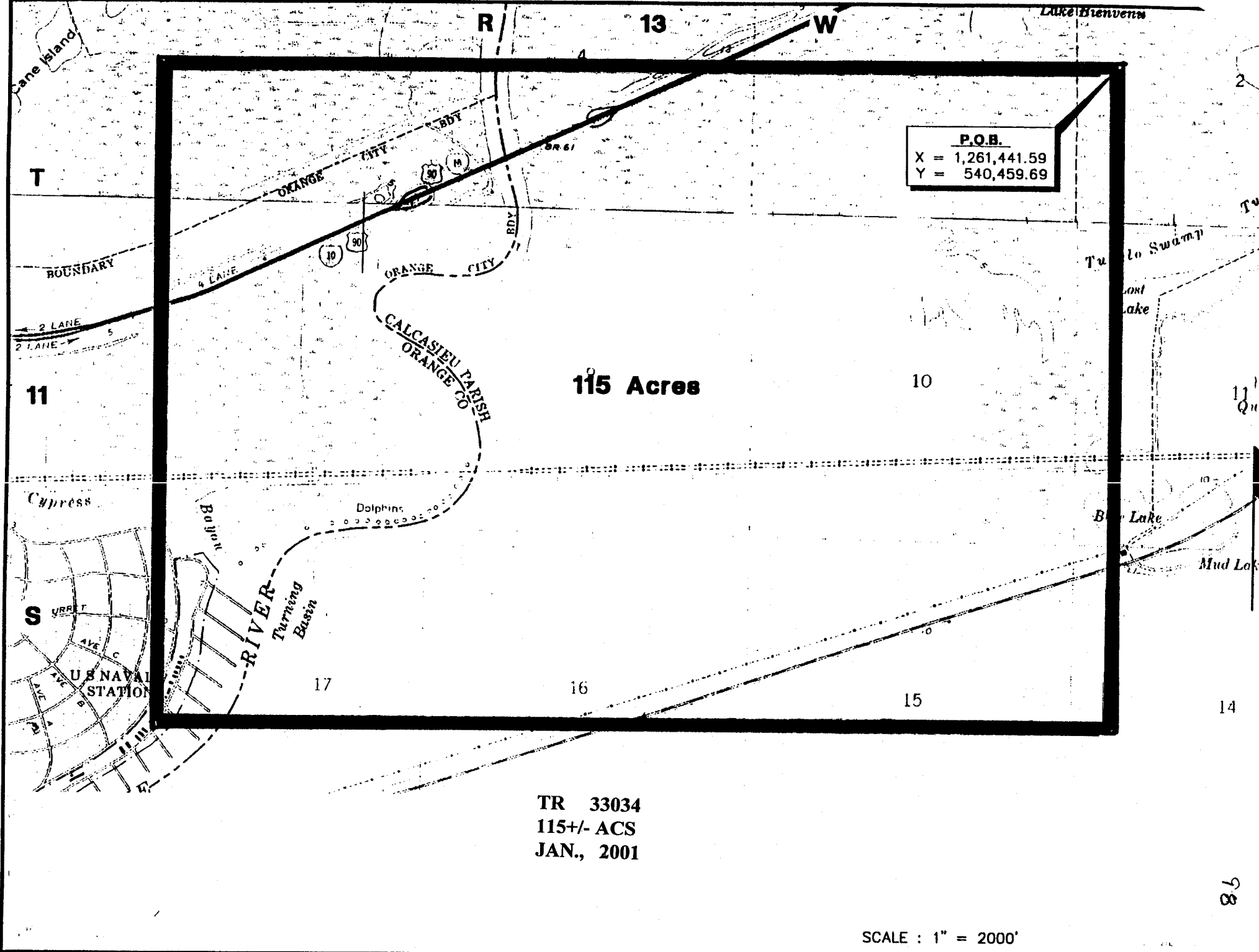
All of the lands now or formerly constituting the beds and bottoms of all water bodies of every nature and description and all islands and other lands formed by accretion or reliction, except tax lands, owned by and not under mineral lease from the State of Louisiana on January 10, 2001, situated in Calcasieu Parish, Louisiana, within the following described boundaries: Beginning at a point having Coordinates of X = 1,261,441.59 and Y = 540,459.69; thence South 11,010.00 feet to a point having Coordinates of X = 1,261,441.59 and Y = 529,449.69; thence West 15,500.00 feet to a point having Coordinates of X = 1,245,941.59 and Y = 529,449.69; thence North 11,010.00 feet to a point having Coordinates of X = 1,245,941.59 and Y = 540,459.69; thence East 15,500.00 feet to the point of beginning, containing approximately **115 acres**, as shown outlined in red on a plat on file in the Office of Mineral Resources, Department of Natural Resources, as provided by the applicant, **LESS AND EXCEPT** that portion thereof, if any, located West of the boundary line between the States of Texas and Louisiana as determined by the report of the Special Master in litigation in the Supreme Court of the United States styled Texas v. Louisiana et al No. 36 Original, or as otherwise approved by said court. All bearings, distances and coordinates are based on Louisiana Coordinate System of 1927 (South Zone).

NOTE: The boundary description and plat for this tract as shown and as advertised were supplied by the nominating party and have not been checked for accuracy by the staff of the Office of Mineral Resources. Anything which may affect the acreage, the shape or the location of the tract, such as non-closure of or incorrect X, Y coordinates or title disputed acreage, or which may affect the status of the tract for leasing, such as overlap of prior leases or nominated tracts, or which may affect potential operations on leases taken, such as inclusion in areas under the jurisdiction of the Department of Wildlife and Fisheries, will not be specifically determined unless and until a bid on this tract is accepted by the Mineral Board; which bid will be accepted on a per acre basis and which acceptance will be conditional upon such specific determinations being made. Once a bid is conditionally accepted by the Mineral Board, the staff will, within a period following the date of the lease sale, determine the acreage, shape and location of the potential lease area of the tract, the status for leasing of all or any portion thereof, and any conditions which may affect potential operations thereon. These determinations may render all or a portion of the bid area unleaseable or may increase or decrease the State claimed acreage such that the total bonus/rental ultimately required may either exceed the bonus/rental paid at the lease sale, which will require additional payment by the successful bidder, or allow the successful bidder a refund of excessive payment. The successful bidder will be notified of the determinations by the staff and given an opportunity to view the bid area acreage, configuration and location as it has been specifically determined. If all or a portion of the bid area is unleaseable due to overlap of an existing lease, the successful bidder will be given an opportunity to accept or reject a new lease on that portion of the bid area which is not unleaseable. If rejected, the bid and all monies accompanying the bid will be returned to the successful bidder and no lease will be issued. In all other cases

a new lease will be issued and any additional per acre bonus/rental, 10% administration fee or \$10 and \$5 per acre fees due as a result of staff determination of more State acreage in the bid area than determined by the successful bidder will be paid prior to the lease being issued. A determination of less State acreage in the bid area will result in a return to the successful bidder of any overpayment.

Applicant: Basin Properties, Inc.

Bidder	Cash Payment	Price / Acre	Rental	Oil	Gas	Other



P.O.B.
 X = 1,261,441.59
 Y = 540,459.69

115 Acres

TR 33034
115+/- ACS
JAN., 2001

SCALE : 1" = 2000'

89

TRACT 33035 - Calcasieu and Cameron Parishes, Louisiana

All of the lands now or formerly constituting the beds and bottoms of all water bodies of every nature and description and all islands and other lands formed by accretion or reliction, except tax lands, owned by and not under mineral lease from the State of Louisiana on January 10, 2001, situated in Calcasieu and Cameron Parishes, Louisiana, within the following described boundaries: Beginning at a point having Coordinates of X = 1,252,651.59 and Y = 529,449.69; thence South 18,480.00 feet to a point having Coordinates of X = 1,252,651.59 and Y = 510,969.69; thence West 12,525.00 feet to a point having Coordinates of X = 1,240,126.59 and Y = 510,969.69; thence North 18,480.00 feet to a point having Coordinates of X = 1,240,126.59 and Y = 529,449.69; thence East 12,525.00 feet to the point of beginning, **LESS AND EXCEPT** all that portion of State Lease No. 1717 that lies within the above described tract, containing approximately **300 acres**, as shown outlined in red on a plat on file in the Office of Mineral Resources, Department of Natural Resources, as provided by the applicant, **LESS AND EXCEPT** that portion thereof, if any, located West of the boundary line between the States of Texas and Louisiana as determined by the report of the Special Master in litigation in the Supreme Court of the United States styled Texas v. Louisiana et al No. 36 Original, or as otherwise approved by said court. All bearings, distances and coordinates are based on Louisiana Coordinate System of 1927 (South Zone).

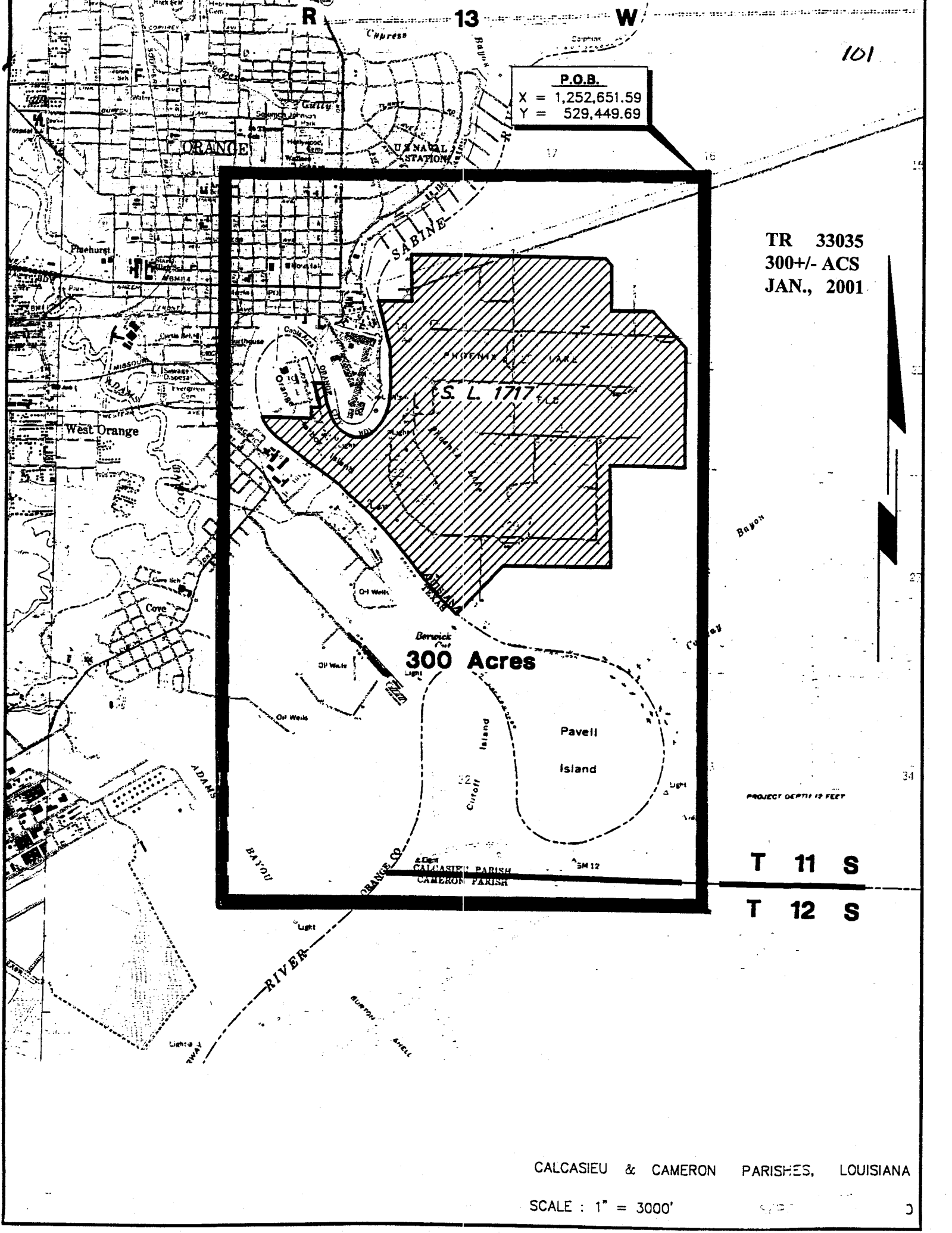
NOTE: The boundary description and plat for this tract as shown and as advertised were supplied by the nominating party and have not been checked for accuracy by the staff of the Office of Mineral Resources. Anything which may affect the acreage, the shape or the location of the tract, such as non-closure of or incorrect X, Y coordinates or title disputed acreage, or which may affect the status of the tract for leasing, such as overlap of prior leases or nominated tracts, or which may affect potential operations on leases taken, such as inclusion in areas under the jurisdiction of the Department of Wildlife and Fisheries, will not be specifically determined unless and until a bid on this tract is accepted by the Mineral Board; which bid will be accepted on a per acre basis and which acceptance will be conditional upon such specific determinations being made. Once a bid is conditionally accepted by the Mineral Board, the staff will, within a period following the date of the lease sale, determine the acreage, shape and location of the potential lease area of the tract, the status for leasing of all or any portion thereof, and any conditions which may affect potential operations thereon. These determinations may render all or a portion of the bid area unleaseable or may increase or decrease the State claimed acreage such that the total bonus/rental ultimately required may either exceed the bonus/rental paid at the lease sale, which will require additional payment by the successful bidder, or allow the successful bidder a refund of excessive payment. The successful bidder will be notified of the determinations by the staff and given an opportunity to view the bid area acreage, configuration and location as it has been specifically determined. If all or a portion of the bid area is unleaseable due to overlap of an existing lease, the successful bidder will be given an opportunity to accept or reject a new lease on that

portion of the bid area which is not unleaseable. If rejected, the bid and all monies accompanying the bid will be returned to the successful bidder and no lease will be issued. In all other cases a new lease will be issued and any additional per acre bonus/rental, 10% administration fee or \$10 and \$5 per acre fees due as a result of staff determination of more State acreage in the bid area than determined by the successful bidder will be paid prior to the lease being issued. A determination of less State acreage in the bid area will result in a return to the successful bidder of any overpayment.

NOTE: The State of Louisiana does hereby reserve, and this lease shall be subject to, the imprescriptible right of surface use in the nature of a servitude in favor of the Department of Natural Resources, including its Offices and Commissions, for the sole purpose of implementing, constructing, servicing and maintaining approved coastal zone management and/or restoration projects. Utilization of any and all rights derived under this lease by the mineral lessee, its agents, successors or assigns, shall not interfere with nor hinder the reasonable surface use by the Department of Natural Resources, its Offices or Commissions, as hereinabove reserved.

Applicant: Basin Properties, Inc.

Bidder	Cash Payment	Price / Acre	Rental	Oil	Gas	Other



101

P.O.B.
 X = 1,252,651.59
 Y = 529,449.69

TR 33035
300+/- ACS
JAN., 2001

300 Acres

PROJECT DEPTH 12 FEET

T 11 S
T 12 S

CALCASIEU & CAMERON PARISHES, LOUISIANA

SCALE : 1" = 3000'

TRACT 33036 - Calcasieu and Cameron Parishes, Louisiana

All of the lands now or formerly constituting the beds and bottoms of all water bodies of every nature and description and all islands and other lands formed by accretion or reliction, except tax lands, owned by and not under mineral lease from the State of Louisiana on January 10, 2001, situated in Calcasieu and Cameron Parishes, Louisiana, within the following described boundaries: Beginning at a point having Coordinates of X = 1,252,651.59 and Y = 529,449.69; thence East 8,790.00 feet to a point having Coordinates of X = 1,261,441.59 and Y = 529,449.69; thence South 18,480.00 feet to a point having Coordinates of X = 1,261,441.59 and Y = 510,969.69; thence West 8,790.00 feet to a point having Coordinates of X = 1,252,651.59 and Y = 510,969.69; thence North 18,480.00 feet to the point of beginning, containing approximately **35 acres**, as shown outlined in red on a plat on file in the Office of Mineral Resources, Department of Natural Resources, as provided by the applicant. All bearings, distances and coordinates are based on Louisiana Coordinate System of 1927 (South Zone).

NOTE: The boundary description and plat for this tract as shown and as advertised were supplied by the nominating party and have not been checked for accuracy by the staff of the Office of Mineral Resources. Anything which may affect the acreage, the shape or the location of the tract, such as non-closure of or incorrect X, Y coordinates or title disputed acreage, or which may affect the status of the tract for leasing, such as overlap of prior leases or nominated tracts, or which may affect potential operations on leases taken, such as inclusion in areas under the jurisdiction of the Department of Wildlife and Fisheries, will not be specifically determined unless and until a bid on this tract is accepted by the Mineral Board; which bid will be accepted on a per acre basis and which acceptance will be conditional upon such specific determinations being made. Once a bid is conditionally accepted by the Mineral Board, the staff will, within a period following the date of the lease sale, determine the acreage, shape and location of the potential lease area of the tract, the status for leasing of all or any portion thereof, and any conditions which may affect potential operations thereon. These determinations may render all or a portion of the bid area unleaseable or may increase or decrease the State claimed acreage such that the total bonus/rental ultimately required may either exceed the bonus/rental paid at the lease sale, which will require additional payment by the successful bidder, or allow the successful bidder a refund of excessive payment. The successful bidder will be notified of the determinations by the staff and given an opportunity to view the bid area acreage, configuration and location as it has been specifically determined. If all or a portion of the bid area is unleaseable due to overlap of an existing lease, the successful bidder will be given an opportunity to accept or reject a new lease on that portion of the bid area which is not unleaseable. If rejected, the bid and all monies accompanying the bid will be returned to the successful bidder and no lease will be issued. In all other cases a new lease will be issued and any additional per acre bonus/rental, 10% administration fee or \$10 and \$5 per acre fees due as a result of staff determination of more State acreage in the bid area than determined by the successful bidder will be paid prior to the lease

being issued. A determination of less State acreage in the bid area will result in a return to the successful bidder of any overpayment.

NOTE: The State of Louisiana does hereby reserve, and this lease shall be subject to, the imprescriptible right of surface use in the nature of a servitude in favor of the Department of Natural Resources, including its Offices and Commissions, for the sole purpose of implementing, constructing, servicing and maintaining approved coastal zone management and/or restoration projects. Utilization of any and all rights derived under this lease by the mineral lessee, its agents, successors or assigns, shall not interfere with nor hinder the reasonable surface use by the Department of Natural Resources, its Offices or Commissions, as hereinabove reserved.

Applicant: Basin Properties, Inc.

Bidder	Cash Payment	Price / Acre	Rental	Oil	Gas	Other

R

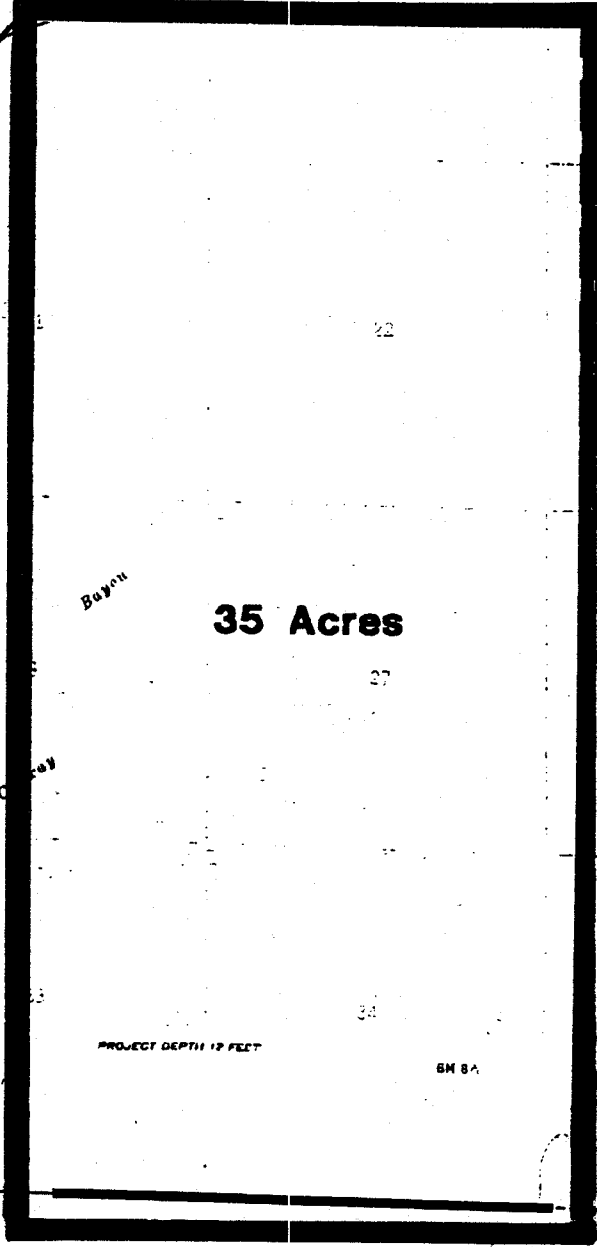
13

W

104

P.O.B.
 X = 1,252,651.59
 Y = 529,449.69

TR 33036
 35+/- ACS
 JAN., 2001



35 Acres

PROJECT DEPTH 12 FEET

BM 8A

INTRACOASTAL

T 11 S

T 12 S

LOUISIANA TEXAS
CALCASIEU PARISH
CAMERON PARISH

CALCASIEU & CAMERON PARISHES, LOUISIANA

SCALE : 1" = 3000'

J