

TRACT 33074 - Terrebonne Parish, Louisiana

All of the lands now or formerly constituting the beds and bottoms of all water bodies of every nature and description and all islands and other lands formed by accretion or reliction, except tax lands, owned by and not under mineral lease from the State of Louisiana on January 10, 2001, situated in Terrebonne Parish, Louisiana, within the following described boundaries: Beginning at a point having Coordinates of X = 2,049,600.00 and Y = 306,600.00; thence West 10,850.00 feet to a point having Coordinates of X = 2,038,750.00 and Y = 306,600.00; thence South 2,800.00 feet to a point having Coordinates of X = 2,038,750.00 and Y = 303,800.00; thence West 5,550.00 feet to a point having Coordinates of X = 2,033,200.00 and Y = 303,800.00; thence North 5,400.00 feet to the Southeast corner of State Lease No. 16645 having Coordinates of X = 2,033,200.00 and Y = 309,200.00; thence North 7,965.00 feet on the East line of said State Lease No. 16645 to its Northeast corner having Coordinates of X = 2,033,200.00 and Y = 317,165.00; thence North 89 degrees 30 minutes 37 seconds East 10,519.46 feet to the Northwest corner of State Lease No. 16362 having Coordinates of X = 2,043,719.08 and Y = 317,254.90; thence on the boundary of said State Lease No. 16362 the following courses: South 01 degree 44 minutes 19 seconds East 2,652.61 feet, North 89 degrees 31 minutes 19 seconds East 1,342.52 feet, South 01 degrees 44 minutes 33 seconds East 2,684.41 feet, and North 89 degrees 28 minutes 01 seconds East 4,028.04 feet to its Southeast corner having Coordinates of X = 2,049,251.52 and Y = 311,969.01; thence East 348.48 feet to a point having Coordinates of X = 2,049,600.00 and Y = 311,969.01; thence South 5,369.01 feet to the point of beginning, containing approximately 102 acres, as shown outlined in red on a plat on file in the Office of Mineral Resources, Department of Natural Resources, as provided by the applicant. All bearings, distances and coordinates are based on Louisiana Coordinate System of 1927 (South Zone).

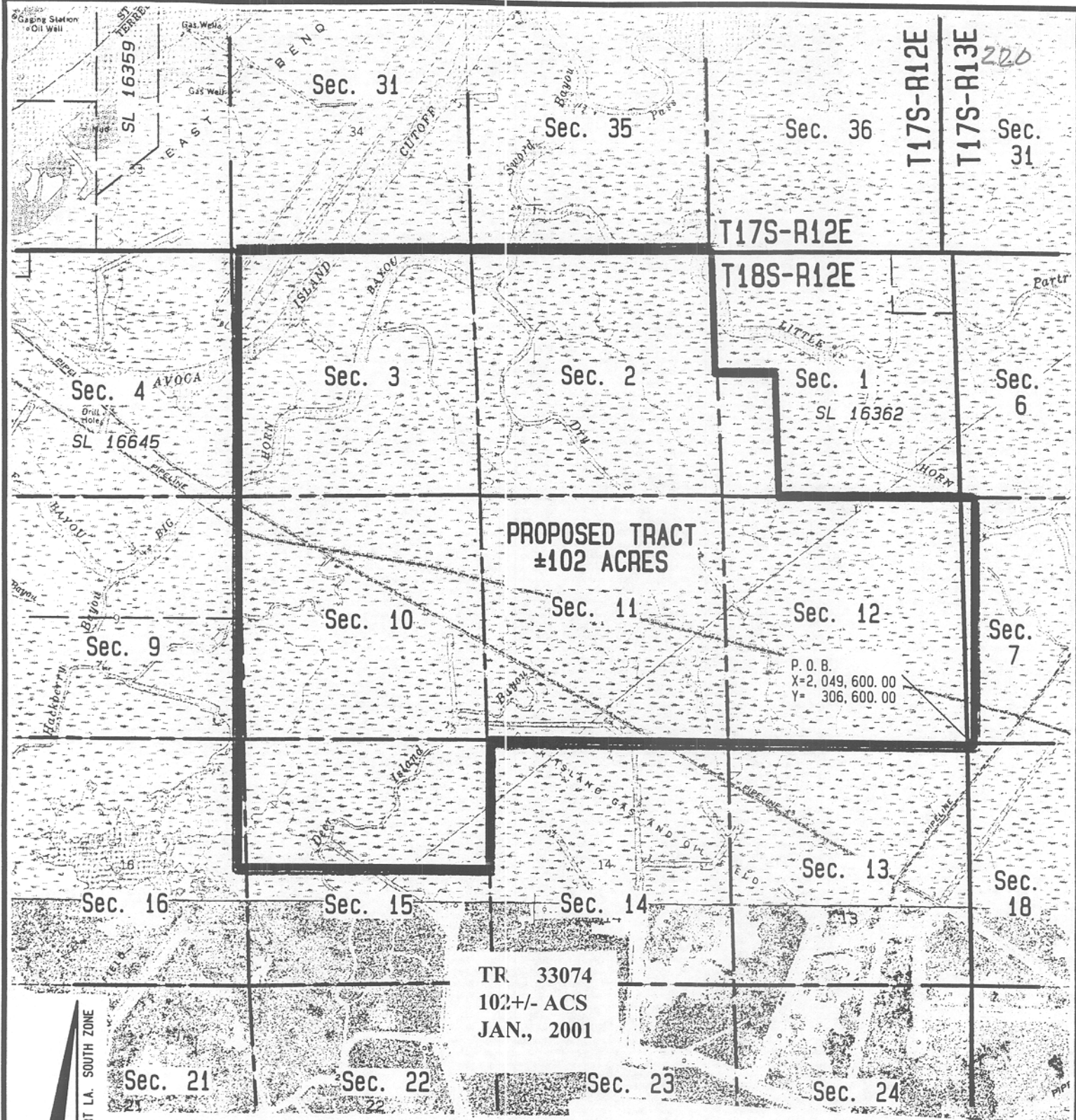
NOTE: The boundary description and plat for this tract as shown and as advertised were supplied by the nominating party and have not been checked for accuracy by the staff of the Office of Mineral Resources. Anything which may affect the acreage, the shape or the location of the tract, such as non-closure of or incorrect X, Y coordinates or title disputed acreage, or which may affect the status of the tract for leasing, such as overlap of prior leases or nominated tracts, or which may affect potential operations on leases taken, such as inclusion in areas under the jurisdiction of the Department of Wildlife and Fisheries, will not be specifically determined unless and until a bid on this tract is accepted by the Mineral Board; which bid will be accepted on a per acre basis and which acceptance will be conditional upon such specific determinations being made. Once a bid is conditionally accepted by the Mineral Board, the staff will, within a period following the date of the lease sale, determine the acreage, shape and location of the potential lease area of the tract, the status for leasing of all or any portion thereof, and any conditions which may affect potential operations thereon. These determinations may render all or a portion of the bid area unleaseable or may increase or decrease the State claimed acreage such that the total bonus/rental ultimately required may either exceed the bonus/rental paid at the lease sale, which will require additional payment by the successful bidder, or allow the successful bidder a

refund of excessive payment. The successful bidder will be notified of the determinations by the staff and given an opportunity to view the bid area acreage, configuration and location as it has been specifically determined. If all or a portion of the bid area is unleaseable due to overlap of an existing lease, the successful bidder will be given an opportunity to accept or reject a new lease on that portion of the bid area which is not unleaseable. If rejected, the bid and all monies accompanying the bid will be returned to the successful bidder and no lease will be issued. In all other cases a new lease will be issued and any additional per acre bonus/rental, 10% administration fee or \$10 and \$5 per acre fees due as a result of staff determination of more State acreage in the bid area than determined by the successful bidder will be paid prior to the lease being issued. A determination of less State acreage in the bid area will result in a return to the successful bidder of any overpayment.

NOTE: The State of Louisiana does hereby reserve, and this lease shall be subject to, the imprescriptible right of surface use in the nature of a servitude in favor of the Department of Natural Resources, including its Offices and Commissions, for the sole purpose of implementing, constructing, servicing and maintaining approved coastal zone management and/or restoration projects. Utilization of any and all rights derived under this lease by the mineral lessee, its agents, successors or assigns, shall not interfere with nor hinder the reasonable surface use by the Department of Natural Resources, its Offices or Commissions, as hereinabove reserved.

Applicant: Louisiana Oil and Gas, Inc.

Bidder	Cash Payment	Price / Acre	Rental	Oil	Gas	Other



TR 33074
 102+/- ACS
 JAN., 2001

P. O. B.
 X=2,049,600.00
 Y= 306,600.00

NAD 27 LAMBERT LA. SOUTH ZONE

Topography obtained from USC&GS Quadrangles
 "MORGAN CITY SW, LA.", 1966 Edition, Photovised
 1980 & "PLUMB BAYOU, LA.", 1974 Edition,
 Photoinspected 1978.



Terrebonne Parish, Louisiana



Scale in Feet

TRACT 33075 - Terrebonne Parish, Louisiana

All of the lands now or formerly constituting the beds and bottoms of all water bodies of every nature and description and all islands and other lands formed by accretion or reliction, except tax lands, owned by and not under mineral lease from the State of Louisiana on January 10, 2001, situated in Terrebonne Parish, Louisiana, within the following described boundaries: Beginning at a point having Coordinates of X = 2,049,600.00 and Y = 306,600.00; thence North 5,369.01 feet to a point having Coordinates of X = 2,049,600.00 and Y = 311,969.01; thence West 348.48 feet to the Southeast corner of State Lease No. 16362 having Coordinates of X = 2,049,251.52 and Y = 311,969.01; thence on the boundary of said State Lease No. 16362 the following courses: North 01 degrees 45 minutes 15 seconds West 4,006.93 feet, South 89 degrees 31 minutes 16 seconds West 1,342.43 feet and North 01 degree 45 minutes 01 seconds West 1,326.35 feet to its most Northerly Northeast corner having Coordinates of X = 2,047,745.97 and Y = 317,288.57; thence North 125.85 feet to a point having Coordinates of X = 2,047,745.97 and Y = 317,414.42; thence East 15,056.88 feet to the Southwest corner of State Lease No. 13346, as amended, having Coordinates of X = 2,062,802.85 and Y = 317,414.42; thence North 89 degrees 31 minutes 15 seconds East 2,518.41 feet on the South line of said State Lease No. 13346 to the most Westerly Northwest corner of State Lease No. 14927, as amended, having Coordinates of X = 2,065,321.17 and Y = 317,435.48; thence South 01 degrees 34 minutes 38 seconds East 1,324.97 feet on the Western boundary of said State Lease No. 14927 to its Southwest corner having Coordinates of X = 2,065,357.64 and Y = 316,111.02; thence South 9,511.02 feet to a point having Coordinates of X = 2,065,357.64 and Y = 306,600.00; thence West 15,757.64 feet to the point of beginning, containing approximately **87 acres**, as shown outlined in red on a plat on file in the Office of Mineral Resources, Department of Natural Resources, as provided by the applicant. All bearings, distances and coordinates are based on Louisiana Coordinate System of 1927 (South Zone).

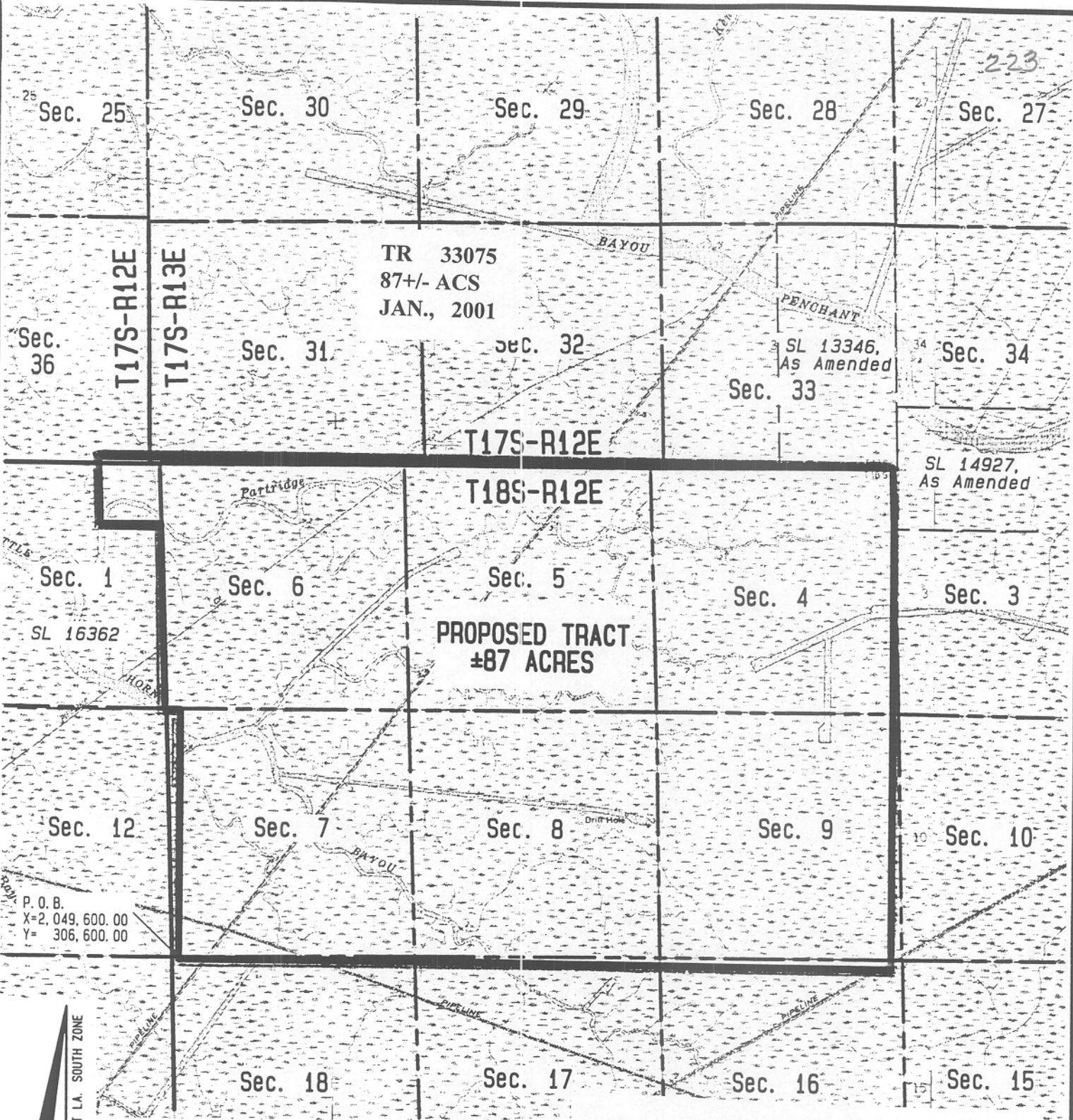
NOTE: The boundary description and plat for this tract as shown and as advertised were supplied by the nominating party and have not been checked for accuracy by the staff of the Office of Mineral Resources. Anything which may affect the acreage, the shape or the location of the tract, such as non-closure of or incorrect X, Y coordinates or title disputed acreage, or which may affect the status of the tract for leasing, such as overlap of prior leases or nominated tracts, or which may affect potential operations on leases taken, such as inclusion in areas under the jurisdiction of the Department of Wildlife and Fisheries, will not be specifically determined unless and until a bid on this tract is accepted by the Mineral Board; which bid will be accepted on a per acre basis and which acceptance will be conditional upon such specific determinations being made. Once a bid is conditionally accepted by the Mineral Board, the staff will, within a period following the date of the lease sale, determine the acreage, shape and location of the potential lease area of the tract, the status for leasing of all or any portion thereof, and any conditions which may affect potential operations thereon. These determinations may render all or a portion of the bid area unleaseable or may increase or decrease the State claimed acreage such that the total bonus/rental ultimately required may either exceed the bonus/rental paid at the lease sale, which will require additional

payment by the successful bidder, or allow the successful bidder a refund of excessive payment. The successful bidder will be notified of the determinations by the staff and given an opportunity to view the bid area acreage, configuration and location as it has been specifically determined. If all or a portion of the bid area is unleaseable due to overlap of an existing lease, the successful bidder will be given an opportunity to accept or reject a new lease on that portion of the bid area which is not unleaseable. If rejected, the bid and all monies accompanying the bid will be returned to the successful bidder and no lease will be issued. In all other cases a new lease will be issued and any additional per acre bonus/rental, 10% administration fee or \$10 and \$5 per acre fees due as a result of staff determination of more State acreage in the bid area than determined by the successful bidder will be paid prior to the lease being issued. A determination of less State acreage in the bid area will result in a return to the successful bidder of any overpayment.

NOTE: The State of Louisiana does hereby reserve, and this lease shall be subject to, the imprescriptible right of surface use in the nature of a servitude in favor of the Department of Natural Resources, including its Offices and Commissions, for the sole purpose of implementing, constructing, servicing and maintaining approved coastal zone management and/or restoration projects. Utilization of any and all rights derived under this lease by the mineral lessee, its agents, successors or assigns, shall not interfere with nor hinder the reasonable surface use by the Department of Natural Resources, its Offices or Commissions, as hereinabove reserved.

Applicant: Louisiana Oil and Gas, Inc.

Bidder	Cash Payment	Price / Acre	Rental	Oil	Gas	Other



TR 33075
87+/- ACS
JAN., 2001

T18S-R12E

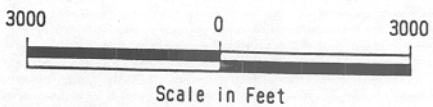
**PROPOSED TRACT
±87 ACRES**

P. O. B.
X=2,049,600.00
Y=306,600.00

NAD 27 LAMBERT LA. SOUTH ZONE

Topography obtained from USC&GS Quadrangles
"MORGAN CITY SW, LA." & "MORGAN CITY SE, LA.",
1966 Edition, Photorevised 1980.

Terrebonne Parish, Louisiana



TRACT 33076 - Lafourche and Terrebonne Parishes, Louisiana

All of the lands now or formerly constituting the beds and bottoms of all water bodies of every nature and description and all islands and other lands formed by accretion or reliction, except tax lands, owned by and not under mineral lease from the State of Louisiana on January 10, 2001, situated in Lafourche and Terrebonne Parishes, Louisiana, within the following described boundaries: Beginning at a point having Coordinates of X = 2,157,296.7509 and Y = 387,307.7463, said point being the Southwest corner of the herein described tract; thence North 18,480.0 feet to a point having Coordinates of X = 2,157,296.7509 and Y = 405,787.7463, said point being the Northwest corner of the herein described tract; thence East 15,500.0 feet to a point having Coordinates of X = 2,172,796.7509 and Y = 405,787.7463, said point being the Northeast corner of the herein described tract; thence South 18,480.0 feet to a point having Coordinates of X = 2,172,796.7509 and Y = 387,307.7463, said point being the Southeast corner of the herein described tract; thence West 15,500.0 feet to the point of beginning, containing approximately **21.00 acres**, as shown outlined in red on a plat on file in the Office of Mineral Resources, Department of Natural Resources, as provided by the applicant. All bearings, distances and coordinates are based on Louisiana Coordinate System of 1927 (South Zone).

NOTE: The boundary description and plat for this tract as shown and as advertised were supplied by the nominating party and have not been checked for accuracy by the staff of the Office of Mineral Resources. Anything which may affect the acreage, the shape or the location of the tract, such as non-closure of or incorrect X, Y coordinates or title disputed acreage, or which may affect the status of the tract for leasing, such as overlap of prior leases or nominated tracts, or which may affect potential operations on leases taken, such as inclusion in areas under the jurisdiction of the Department of Wildlife and Fisheries, will not be specifically determined unless and until a bid on this tract is accepted by the Mineral Board; which bid will be accepted on a per acre basis and which acceptance will be conditional upon such specific determinations being made. Once a bid is conditionally accepted by the Mineral Board, the staff will, within a period following the date of the lease sale, determine the acreage, shape and location of the potential lease area of the tract, the status for leasing of all or any portion thereof, and any conditions which may affect potential operations thereon. These determinations may render all or a portion of the bid area unleaseable or may increase or decrease the State claimed acreage such that the total bonus/rental ultimately required may either exceed the bonus/rental paid at the lease sale, which will require additional payment by the successful bidder, or allow the successful bidder a refund of excessive payment. The successful bidder will be notified of the determinations by the staff and given an opportunity to view the bid area acreage, configuration and location as it has been specifically determined. If all or a portion of the bid area is unleaseable due to overlap of an existing lease, the successful bidder will be given an opportunity to accept or reject a new lease on that portion of the bid area which is not unleaseable. If rejected, the bid and all monies accompanying the bid will be returned to the successful bidder and no lease will be issued. In all other cases

a new lease will be issued and any additional per acre bonus/rental, 10% administration fee or \$10 and \$5 per acre fees due as a result of staff determination of more State acreage in the bid area than determined by the successful bidder will be paid prior to the lease being issued. A determination of less State acreage in the bid area will result in a return to the successful bidder of any overpayment.

Applicant: Synergy Exploration

Bidder	Cash Payment	Price / Acre	Rental	Oil	Gas	Other

16th Plantation
NW/c X = 2,157,296.7509
Y = 405,787.7463

NE/c X = 2,172,796.7509
Y = 405,787.7463

LAFOURCHE PARISH

T 15 S
R 16 E

21.00 Acres
TERREBONNE PARISH

TR 33076
21.00+/- ACS
JAN., 2001

POB - SW/c X = 2,157,296.7509
Y = 387,307.7463

SE/c X = 2,172,796.7509
Y = 387,307.7463

