

INLAND

TRACTS

TRACT 33030 - WITHDRAWN PER APPLICANT

TRACT 33031 - Calcasieu Parish, Louisiana

All of the State lands within the Sabine Island Wildlife Management Area and all of the lands now or formerly constituting the beds and bottoms of all water bodies of every nature and description and all islands and other lands formed by accretion or reliction, except tax lands, owned by and not under mineral lease from the State of Louisiana on January 10, 2001, situated in Calcasieu Parish, Louisiana, within the following described boundaries: Beginning at a point having Coordinates of X = 1,261,441.59 and Y = 560,769.69; thence West 15,925.00 feet to a point having Coordinates of X = 1,245,516.59 and Y = 560,769.69; thence North 9,290.00 feet to a point having Coordinates of X = 1,245,516.59 and Y = 570,059.69; thence East 15,925.00 feet to a point having Coordinates of X = 1,261,441.59 and Y = 570,059.69; thence South 9,290.00 feet to the point of beginning, **LESS AND EXCEPT** all that portion of Section 16, Township 10 South, Range 13 West, owned by the Calcasieu Parish School Board and State Lease No. 16232 that lies within the above described tract, containing approximately 1,560 acres, as shown outlined in red on a plat on file in the Office of Mineral Resources, Department of Natural Resources, as provided by the applicant, **LESS AND EXCEPT** that portion thereof, if any, located West of the boundary line between the States of Texas and Louisiana as determined by the report of the Special Master in litigation in the Supreme Court of the United States styled Texas v. Louisiana et al No. 36 Original, or as otherwise approved by said court. All bearings, distances and coordinates are based on Louisiana Coordinate System of 1927 (South Zone).

NOTE: The boundary description and plat for this tract as shown and as advertised were supplied by the nominating party and have not been checked for accuracy by the staff of the Office of Mineral Resources. Anything which may affect the acreage, the shape or the location of the tract, such as non-closure of or incorrect X, Y coordinates or title disputed acreage, or which may affect the status of the tract for leasing, such as overlap of prior leases or nominated tracts, or which may affect potential operations on leases taken, such as inclusion in areas under the jurisdiction of the Department of Wildlife and Fisheries, will not be specifically determined unless and until a bid on this tract is accepted by the Mineral Board; which bid will be accepted on a per acre basis and which acceptance will be conditional upon such specific determinations being made. Once a bid is conditionally accepted by the Mineral Board, the staff will, within a period following the date of the lease sale, determine the acreage, shape and location of the potential lease area of the tract, the status for leasing of all or any portion thereof, and any conditions which may affect potential operations thereon. These determinations may render all or a portion of the bid area unleaseable or may increase or decrease the State claimed acreage such that the total bonus/rental ultimately required may either exceed the bonus/rental paid at the lease sale, which will require additional payment by the successful bidder, or allow the successful bidder a refund of excessive payment. The successful bidder will be notified of the determinations by the staff and given an opportunity to view the bid area acreage, configuration and location as it has been specifically determined. If all or a portion of the bid area is

unleasable due to overlap of an existing lease, the successful bidder will be given an opportunity to accept or reject a new lease on that portion of the bid area which is not unleasable. If rejected, the bid and all monies accompanying the bid will be returned to the successful bidder and no lease will be issued. In all other cases a new lease will be issued and any additional per acre bonus/rental, 10% administration fee or \$10 and \$5 per acre fees due as a result of staff determination of more State acreage in the bid area than determined by the successful bidder will be paid prior to the lease being issued. A determination of less State acreage in the bid area will result in a return to the successful bidder of any overpayment.

NOTE: The above described tract is located in the Sabine Island Wildlife Management Area and Special Rules and Regulations have been promulgated by the Louisiana Department of Wildlife and Fisheries for the protection of the game and wildlife on the aforesaid tract. Any lease awarded by the Board on said tract shall be subject to these Rules and Regulations, a copy of which shall be attached to and made a part of any lease awarded by the Mineral Board. Copies of the applicable Rules and Regulations may be obtained from the Office of Mineral Resources upon request.

NOTE: 1. No activities will be allowed without written authorization of the Louisiana Department of Wildlife and Fisheries. All projects will be coordinated and approved by the Sabine Wildlife Management Area Supervisor prior to any activities on the wildlife management area.

2. Proposed projects will be evaluated on a case by case basis. Modifications to proposed project features including but not limited to access routes, well sites, flowlines and appurtenant structures may be required by the Louisiana Department of Wildlife and Fisheries.

3. Compliance with the Sabine Wildlife Management Area regulations will be required unless otherwise specified by the Department.

4. Compensatory mitigation will be required to offset unavoidable habitat impacts.

5. Removal of all structures, facilities and equipment will be required within 120 days of abandonment unless otherwise agreed to by the Department.

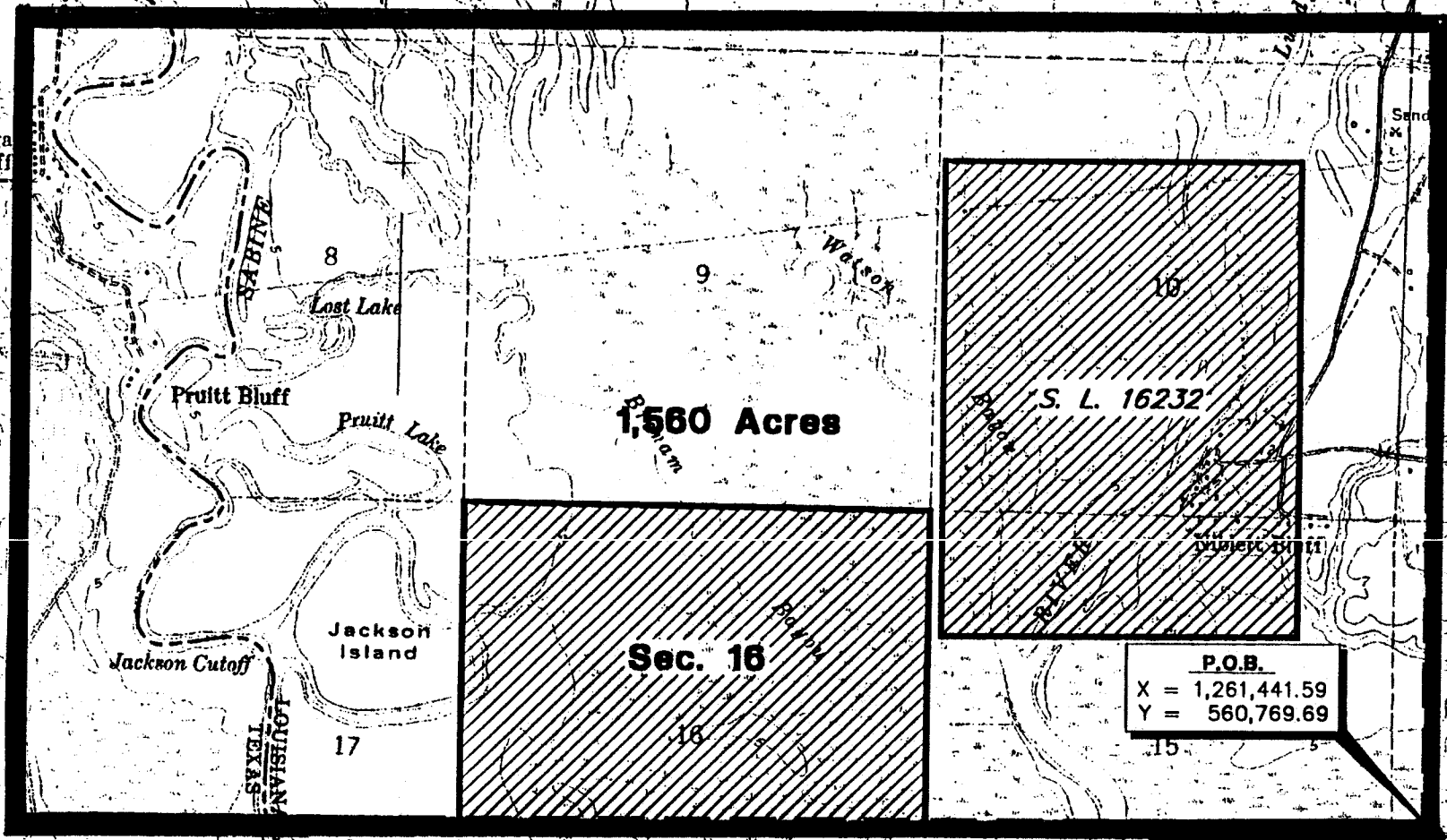
6. No activities will be allowed during the hunting season unless approved by the Department.

7. Prior to submitting applications for wetland permits to Federal and State permitting agencies, the leaseholder shall coordinate project details with the Department.

NOTE: The Department will require a minimum bonus of \$350.00 per acre and a minimum royalty of 25%.

Applicant: Basin Properties, Inc.

Bidder	Cash Payment	Price / Acre	Rental	Oil	Gas	Other



TR 33031
 1,560+/- ACS
 JAN., 2001

CALCASIEU PARISH, LOUISIANA

SCALE : 1" = 2000'

87

TRACT 33032 - Calcasieu Parish, Louisiana

All of the State lands within the Sabine Island Wildlife Management Area and all of the lands now or formerly constituting the beds and bottoms of all water bodies of every nature and description and all islands and other lands formed by accretion or reliction, except tax lands, owned by and not under mineral lease from the State of Louisiana on January 10, 2001, situated in Calcasieu Parish, Louisiana, within the following described boundaries: Beginning at a point having Coordinates of X = 1,261,441.59 and Y = 560,769.69; thence South 9,290.00 feet to a point having Coordinates of X = 1,261,441.59 and Y = 551,479.69; thence West 13,480.00 feet to a point having Coordinates of X = 1,247,961.59 and Y = 551,479.69; thence North 9,290.00 feet to a point having Coordinates of X = 1,247,961.59 and Y = 560,769.69; thence East 13,480.00 feet to the point of beginning, **LESS AND EXCEPT** all that portion of Section 16, Township 10 South, Range 13 West, owned by the Calcasieu Parish School Board, that lies within the above described tract, containing approximately **980 acres**, as shown outlined in red on a plat on file in the Office of Mineral Resources, Department of Natural Resources, as provided by the applicant, **LESS AND EXCEPT** that portion thereof, if any, located West of the boundary line between the States of Texas and Louisiana as determined by the report of the Special Master in litigation in the Supreme Court of the United States styled Texas v. Louisiana et al No. 36 Original, or as otherwise approved by said court. All bearings, distances and coordinates are based on Louisiana Coordinate System of 1927 (South Zone).

NOTE: The boundary description and plat for this tract as shown and as advertised were supplied by the nominating party and have not been checked for accuracy by the staff of the Office of Mineral Resources. Anything which may affect the acreage, the shape or the location of the tract, such as non-closure of or incorrect X, Y coordinates or title disputed acreage, or which may affect the status of the tract for leasing, such as overlap of prior leases or nominated tracts, or which may affect potential operations on leases taken, such as inclusion in areas under the jurisdiction of the Department of Wildlife and Fisheries, will not be specifically determined unless and until a bid on this tract is accepted by the Mineral Board; which bid will be accepted on a per acre basis and which acceptance will be conditional upon such specific determinations being made. Once a bid is conditionally accepted by the Mineral Board, the staff will, within a period following the date of the lease sale, determine the acreage, shape and location of the potential lease area of the tract; the status for leasing of all or any portion thereof, and any conditions which may affect potential operations thereon. These determinations may render all or a portion of the bid area unleaseable or may increase or decrease the State claimed acreage such that the total bonus/rental ultimately required may either exceed the bonus/rental paid at the lease sale, which will require additional payment by the successful bidder, or allow the successful bidder a refund of excessive payment. The successful bidder will be notified of the determinations by the staff and given an opportunity to view the bid area acreage, configuration and location as it has been specifically determined. If all or a portion of the bid area is unleaseable due to overlap of an existing lease, the successful bidder

will be given an opportunity to accept or reject a new lease on that portion of the bid area which is not unleaseable. If rejected, the bid and all monies accompanying the bid will be returned to the successful bidder and no lease will be issued. In all other cases a new lease will be issued and any additional per acre bonus/rental, 10% administration fee or \$10 and \$5 per acre fees due as a result of staff determination of more State acreage in the bid area than determined by the successful bidder will be paid prior to the lease being issued. A determination of less State acreage in the bid area will result in a return to the successful bidder of any overpayment.

NOTE: The above described tract is located in the Sabine Island Wildlife Management Area and Special Rules and Regulations have been promulgated by the Louisiana Department of Wildlife and Fisheries for the protection of the game and wildlife on the aforesaid tract. Any lease awarded by the Board on said tract shall be subject to these Rules and Regulations, a copy of which shall be attached to and made a part of any lease awarded by the Mineral Board. Copies of the applicable Rules and Regulations may be obtained from the Office of Mineral Resources upon request.

NOTE: 1. No activities will be allowed without written authorization of the Louisiana Department of Wildlife and Fisheries. All projects will be coordinated and approved by the Sabine Wildlife Management Area Supervisor prior to any activities on the wildlife management area.

2. Proposed projects will be evaluated on a case by case basis. Modifications to proposed project features including but not limited to access routes, well sites, flowlines and appurtenant structures may be required by the Louisiana Department of Wildlife and Fisheries.

3. Compliance with the Sabine Wildlife Management Area regulations will be required unless otherwise specified by the Department.

4. Compensatory mitigation will be required to offset unavoidable habitat impacts.

5. Removal of all structures, facilities and equipment will be required within 120 days of abandonment unless otherwise agreed to by the Department.

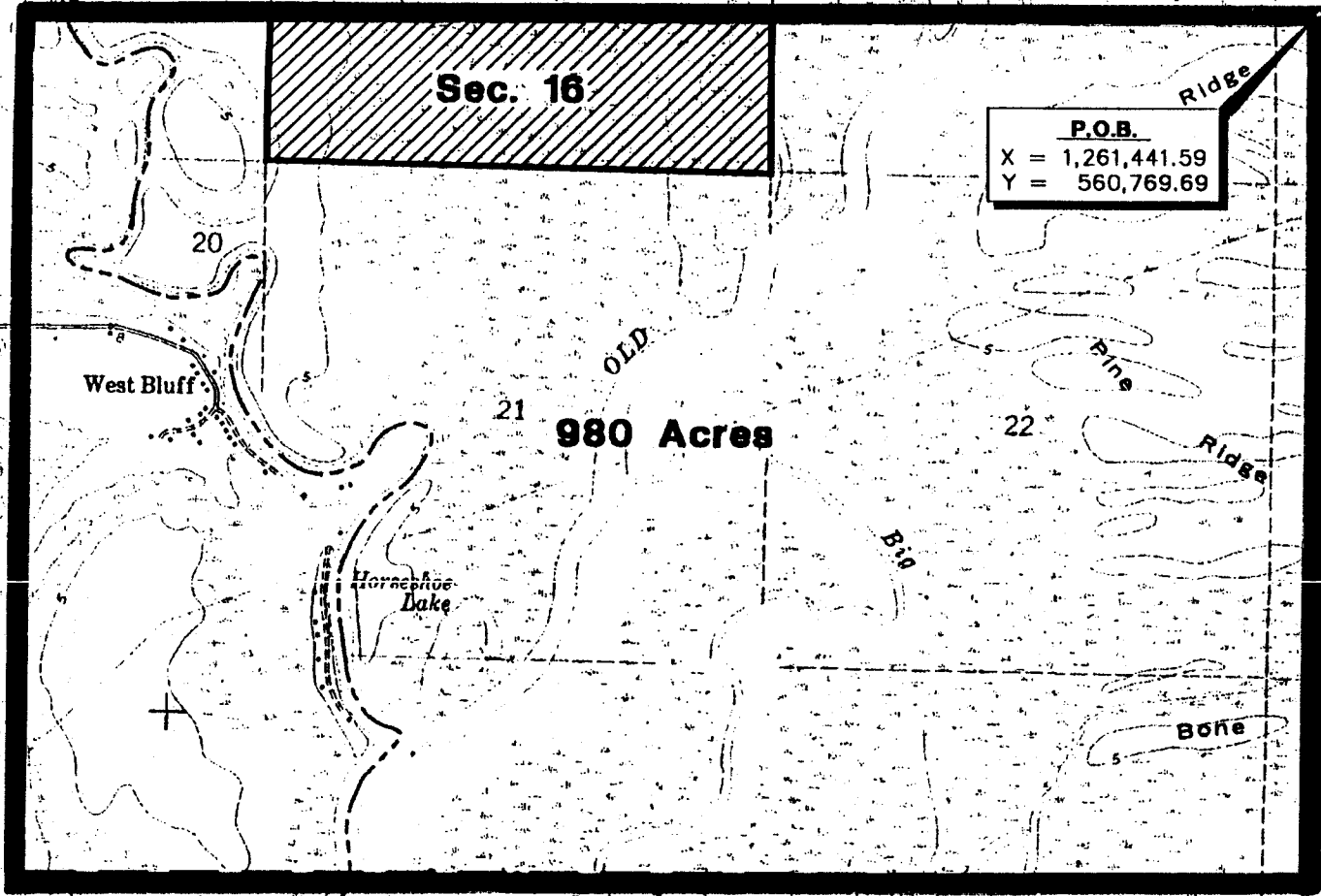
6. No activities will be allowed during the hunting season unless approved by the Department.

7. Prior to submitting applications for wetland permits to Federal and State permitting agencies, the leaseholder shall coordinate project details with the Department.

NOTE: The Department will require a minimum bonus of \$350.00 per acre and a minimum royalty of 25%.

Applicant: Basin Properties, Inc.

Bidder	Cash Payment	Price / Acre	Rental	Oil	Gas	Other



P.O.B.
X = 1,261,441.59
Y = 560,769.69

TR 33032
980+/- ACS
JAN., 2001

CALCASIEU PARISH, LOUISIANA

SCALE : 1" = 2000'

91

TRACT 33033 - Calcasieu Parish, Louisiana

All of the State lands within the Sabine Island Wildlife Management Area and all of the lands now or formerly constituting the beds and bottoms of all water bodies of every nature and description and all islands and other lands formed by accretion or reliction, except tax lands, owned by and not under mineral lease from the State of Louisiana on January 10, 2001, situated in Calcasieu Parish, Louisiana, within the following described boundaries: Beginning at a point having Coordinates of X = 1,261,441.59 and Y = 540,459.69; thence West 13,130.00 feet to a point having Coordinates of X = 1,248,311.59 and Y = 540,459.69; thence North 11,020.00 feet to a point having Coordinates of X = 1,248,311.59 and Y = 551,479.69; thence East 13,130.00 feet to a point having Coordinates of X = 1,261,441.59 and Y = 551,479.69; thence South 11,020.00 feet to the point of beginning, containing approximately **630 acres**, as shown outlined in red on a plat on file in the Office of Mineral Resources, Department of Natural Resources, as provided by the applicant, **LESS AND EXCEPT** that portion thereof, if any, located West of the boundary line between the States of Texas and Louisiana as determined by the report of the Special Master in litigation in the Supreme Court of the United States styled Texas v. Louisiana et al No. 36 Original, or as otherwise approved by said court. All bearings, distances and coordinates are based on Louisiana Coordinate System of 1927 (South Zone).

NOTE: The boundary description and plat for this tract as shown and as advertised were supplied by the nominating party and have not been checked for accuracy by the staff of the Office of Mineral Resources. Anything which may affect the acreage, the shape or the location of the tract, such as non-closure of or incorrect X, Y coordinates or title disputed acreage, or which may affect the status of the tract for leasing, such as overlap of prior leases or nominated tracts, or which may affect potential operations on leases taken, such as inclusion in areas under the jurisdiction of the Department of Wildlife and Fisheries, will not be specifically determined unless and until a bid on this tract is accepted by the Mineral Board; which bid will be accepted on a per acre basis and which acceptance will be conditional upon such specific determinations being made. Once a bid is conditionally accepted by the Mineral Board, the staff will, within a period following the date of the lease sale, determine the acreage, shape and location of the potential lease area of the tract, the status for leasing of all or any portion thereof, and any conditions which may affect potential operations thereon. These determinations may render all or a portion of the bid area unleaseable or may increase or decrease the State claimed acreage such that the total bonus/rental ultimately required may either exceed the bonus/rental paid at the lease sale, which will require additional payment by the successful bidder, or allow the successful bidder a refund of excessive payment. The successful bidder will be notified of the determinations by the staff and given an opportunity to view the bid area acreage, configuration and location as it has been specifically determined. If all or a portion of the bid area is unleaseable due to overlap of an existing lease, the successful bidder will be given an opportunity to accept or reject a new lease on that portion of the bid area which is not unleaseable. If rejected, the bid and all monies accompanying the bid will be returned to the

successful bidder and no lease will be issued. In all other cases a new lease will be issued and any additional per acre bonus/rental, 10% administration fee or \$10 and \$5 per acre fees due as a result of staff determination of more State acreage in the bid area than determined by the successful bidder will be paid prior to the lease being issued. A determination of less State acreage in the bid area will result in a return to the successful bidder of any overpayment.

NOTE: The above described tract is located in the Sabine Island Wildlife Management Area and Special Rules and Regulations have been promulgated by the Louisiana Department of Wildlife and Fisheries for the protection of the game and wildlife on the aforesaid tract. Any lease awarded by the Board on said tract shall be subject to these Rules and Regulations, a copy of which shall be attached to and made a part of any lease awarded by the Mineral Board. Copies of the applicable Rules and Regulations may be obtained from the Office of Mineral Resources upon request.

NOTE: 1. No activities will be allowed without written authorization of the Louisiana Department of Wildlife and Fisheries. All projects will be coordinated and approved by the Sabine Wildlife Management Area Supervisor prior to any activities on the wildlife management area.

2. Proposed projects will be evaluated on a case by case basis. Modifications to proposed project features including but not limited to access routes, well sites, flowlines and appurtenant structures may be required by the Louisiana Department of Wildlife and Fisheries.

3. Compliance with the Sabine Wildlife Management Area regulations will be required unless otherwise specified by the Department.

4. Compensatory mitigation will be required to offset unavoidable habitat impacts.

5. Removal of all structures, facilities and equipment will be required within 120 days of abandonment unless otherwise agreed to by the Department.

6. No activities will be allowed during the hunting season unless approved by the Department.

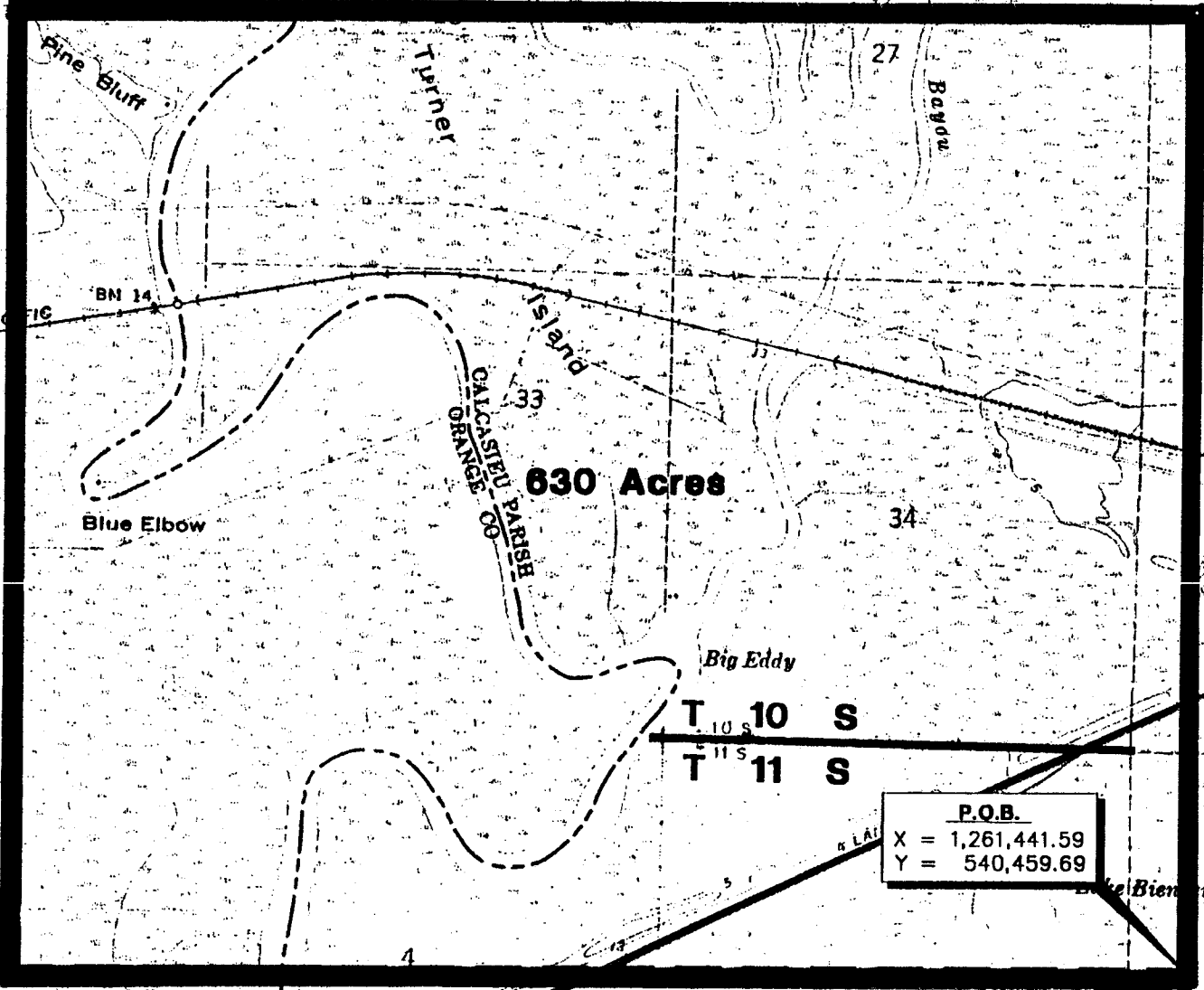
7. Prior to submitting applications for wetland permits to Federal and State permitting agencies, the leaseholder shall coordinate project details with the Department.

NOTE: The Department will require a minimum bonus of \$350.00 per acre and a minimum royalty of 25%.

Applicant: Basin Properties, Inc.

Bidder	Cash Payment	Price / Acre	Rental	Oil	Gas	Other

R 13 W



TR 33033
 630+/- ACS
 JAN., 2001

East Cane Island

T 10 S
 T 11 S

P.O.B.
 X = 1,261,441.59
 Y = 540,459.69

CALCASIEU PARISH, LOUISIANA

SCALE : 1" = 2000'

95