



BLOCK 13

BLOCK 14

P.O.B.  
X=2,290,338.06  
Y= 134,330.00

TR 32244  
2,065.96 +ACS.  
JAN., 2000

BLOCK 17

BLOCK 18

LA

USA

TERREBONNE PARISH

SOUTH TIMBALIER AREA, REV.

OFFICIAL COPY  
OFFICE OF MINERAL RESOURCES  
DEPT. OF NATURAL RESOURCES  
DO NOT REMOVE



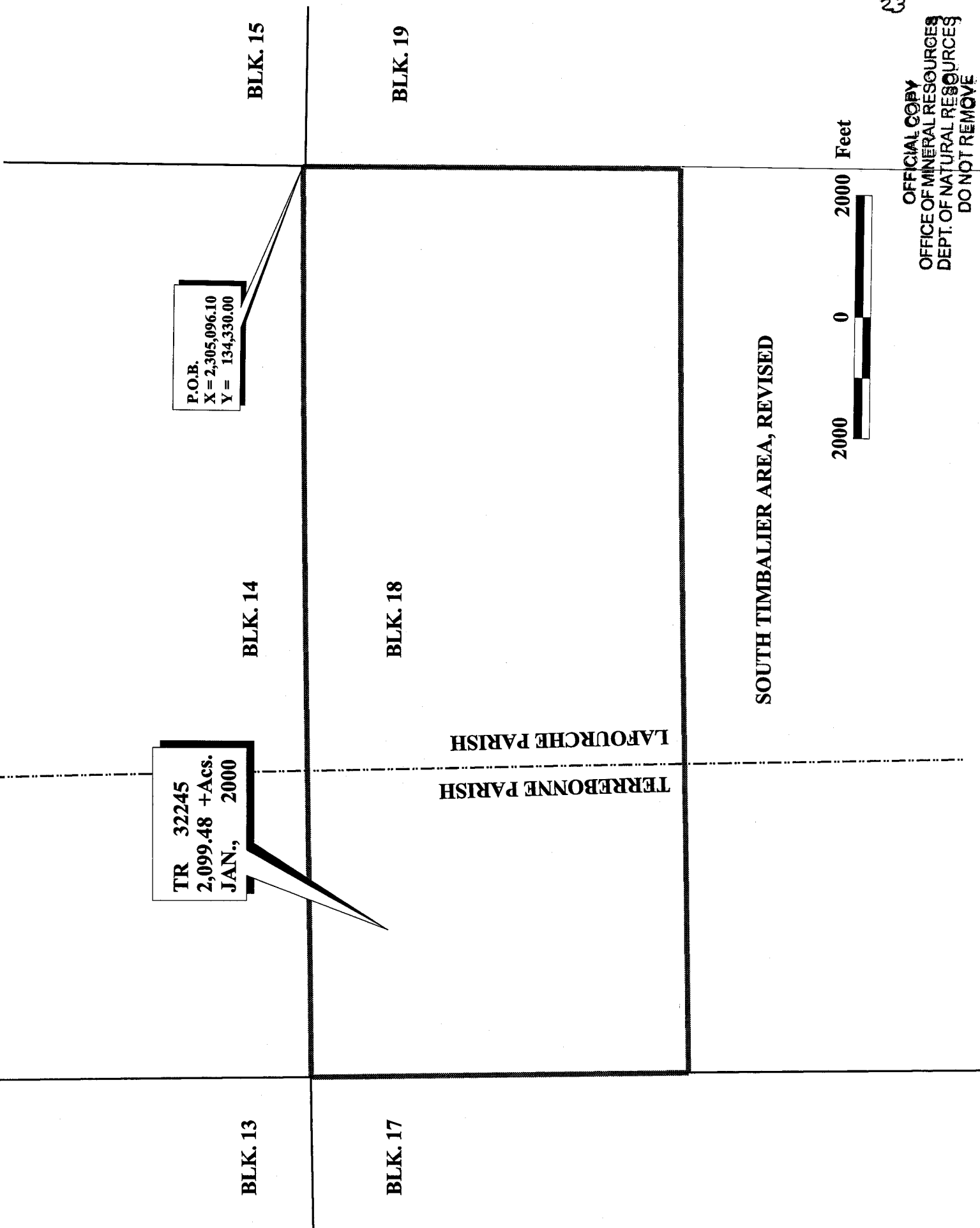
**TRACT 32245 - PORTION OF BLOCK 18, SOUTH TIMBALIER AREA, REVISED, Lafourche and Terrebonne Parishes, Louisiana**

That portion of Block 18, South Timbalier Area, Revised, Lafourche and Terrebonne Parishes, Louisiana, belonging to the State of Louisiana and not under mineral lease on January 12, 2000, described as follows: Beginning at the Northeast corner of Block 18, South Timbalier Area, Revised, having Coordinates of X = 2,305,096.10 and Y = 134,330.00, said point being the point of beginning; thence South a distance of 6,196.85 feet to a point having Coordinates of X = 2,305,096.10 and Y = 128,133.15; thence West a distance of 14,758.04 feet to a point having Coordinates of X = 2,290,338.06 and Y = 128,133.15; thence North a distance of 6,196.85 feet to a point having Coordinates of X = 2,290,338.06 and Y = 134,330.00; thence East at a distance of 14,758.04 feet to the point of beginning, containing approximately 2,099.48 acres, as shown outlined in red on a plat on file in the Office of Mineral Resources, Department of Natural Resources. All bearings, distances and coordinates are based on Louisiana Coordinate System of 1927 (South Zone).

NOTE: The State of Louisiana does hereby reserve, and this lease shall be subject to, the imprescriptible right of surface use in the nature of a servitude in favor of the Department of Natural Resources, including its Offices and Commissions, for the sole purpose of implementing, constructing, servicing and maintaining approved coastal zone management and/or restoration projects. Utilization of any and all rights derived under this lease by the mineral lessee, its agents, successors or assigns, shall not interfere with nor hinder the reasonable surface use by the Department of Natural Resources, its Offices or Commissions, as hereinabove reserved.

Applicant: C.E. Bishop

Bidder	Cash Payment	Price / Acre	Rental	Oil	Gas	Other



BLK. 15

BLK. 19

P.O.B.  
 X = 2,305,096.10  
 Y = 134,330.00

BLK. 14

BLK. 18

TR 32245  
 2,099.48 +Acs.  
 JAN., 2000

LAFORCHE PARISH  
 TERREBONNE PARISH

SOUTH TIMBALIER AREA, REVISED

BLK. 13

BLK. 17



**TRACT 32246 - PORTION OF BLOCK 18, SOUTH TIMBALIER AREA, REVISED, Lafourche and Terrebonne Parishes, Louisiana**

That portion of Block 18, South Timbalier Area, Revised, Lafourche and Terrebonne Parishes, Louisiana, belonging to the State of Louisiana and not under mineral lease on January 12, 2000, described as follows: Beginning at a point having Coordinates of X = 2,305,096.10 and Y = 128,133.15; thence South 6,081.04 feet to a point having Coordinates of X = 2,305,096.10 and Y = 122,052.11; thence Southwesterly on an arc having a radius of 18,240.60 feet and a center at X = 2,298,538 and Y = 139,073 to a point having Coordinates of X = 2,302,489 and Y = 121,265; thence South 77 degrees 29 minutes 26 seconds West 2,557.72 feet to a point having Coordinates of X = 2,299,992 and Y = 120,711; thence Southwesterly on an arc having a radius of 18,240.60 feet and a center at X = 2,296,041 and Y = 138,519 to a point having Coordinates of X = 2,295,411 and Y = 120,289; thence North 88 degrees 01 minutes 14 seconds West 897.54 feet to a point having Coordinates of X = 2,294,514 and Y = 120,320; thence Northwesterly on an arc having a radius of 18,240.60 feet and a center of X = 2,295,144 and Y = 138,550 to a point having Coordinates of X = 2,290,338.06 and Y = 120,953.91; thence North 7,179.24 feet to a point having Coordinates of X = 2,290,338.06 and Y = 128,133.15; thence East a distance of 14,758.04 feet to the point of beginning, containing approximately 2,500.00 acres, as shown outlined in red on a plat on file in the Office of Mineral Resources, Department of Natural Resources, **LESS AND EXCEPT** that portion thereof, if any, which is more than three nautical miles from the coast line as determined by the Report of the Special Master in the litigation in the Supreme Court of the United States styled United States v. State of Louisiana et al No. 9 Original, said three mile line as set out in the June, 1975, decree of the Supreme Court. All bearings, distances and coordinates are based on Louisiana Coordinate System of 1927 (South Zone).

NOTE: The State of Louisiana does hereby reserve, and this lease shall be subject to, the imprescriptible right of surface use in the nature of a servitude in favor of the Department of Natural Resources, including its Offices and Commissions, for the sole purpose of implementing, constructing, servicing and maintaining approved coastal zone management and/or restoration projects. Utilization of any and all rights derived under this lease by the mineral lessee, its agents, successors or assigns, shall not interfere with nor hinder the reasonable surface use by the Department of Natural Resources, its Offices or Commissions, as hereinabove reserved.

Applicant: C.E. Bishop

Bidder	Cash Payment	Price / Acre	Rental	Oil	Gas	Other



BLK. 19

BLK. 18

BLK. 17

P.O.B.  
X = 2,305,096.10  
Y = 128,133.15

TR 32246  
2500.00 +acs.  
JAN., 2000

TERREBONE PARISH  
LAFOURCHE PARISH

OFFICIAL COPY  
OFFICE OF MINERAL RESOURCES  
DEPT. OF NATURAL RESOURCES  
DO NOT REMOVE



SOUTH TIMBALIER AREA, REVISED

LOUISIANA  
USA



**TRACT 32247 - PORTION OF BLOCK 6, BAY MARCHAND AREA, Lafourche Parish, Louisiana**

That portion of Block 6, Bay Marchand Area, Lafourche Parish, Louisiana, belonging to the State of Louisiana and not under mineral lease on January 12, 2000, described as follows: Beginning at the Southwest corner of Block 6, Bay Marchand Area, having Coordinates of X = 2,319,854.14 and Y = 134,330.00; thence North 4,470.21 feet on the West line of said Block 6 to a point having Coordinates of X = 2,319,854.14 and Y = 138,800.21; thence the following courses: North 66 degrees 45 minutes 47 seconds East 3,641.23 feet, North 663.20 feet and North 81 degrees 38 minutes 03 seconds East 3,436.57 feet to the most Northerly point of State Lease No. 13232, as amended, having Coordinates of X = 2,326,600.00 and Y = 141,400.00; thence on the boundary of said State Lease No. 13232 the following courses: South 63 degrees 26 minutes 06 seconds West 3,801.33 feet, South 52 degrees 02 minutes 45 seconds East 3,039.27 feet and South 64 degrees 46 minutes 57 seconds East 4,857.14 feet to a point on the East line of said Block 6, Bay Marchand Area, having Coordinates of X = 2,329,990.70 and Y = 135,761.34; thence South 21 degrees 37 minutes 46 seconds East 1,539.76 feet on said East line of said Block 6 to its Southeast corner having Coordinates of X = 2,330,558.25 and Y = 134,330.00; thence West 10,704.11 feet on said South line of said Block 6 to the point of beginning, containing approximately 947.47 acres, as shown outlined in red on a plat on file in the Office of Mineral Resources, Department of Natural Resources. All bearings, distances and coordinates are based on Louisiana Coordinate System of 1927 (South Zone).

NOTE: The State of Louisiana does hereby reserve, and this lease shall be subject to, the imprescriptible right of surface use in the nature of a servitude in favor of the Department of Natural Resources, including its Offices and Commissions, for the sole purpose of implementing, constructing, servicing and maintaining approved coastal zone management and/or restoration projects. Utilization of any and all rights derived under this lease by the mineral lessee, its agents, successors or assigns, shall not interfere with nor hinder the reasonable surface use by the Department of Natural Resources, its Offices or Commissions, as hereinabove reserved.

Applicant: D.G. Andrews

Bidder	Cash Payment	Price / Acre	Rental	Oil	Gas	Other